

## DEPARTMENT 23

### SECTION 101

#### Apiary Products

Chairman: Merv Esh - ext. 2311

Judging: Tuesday, Week of Fair - 8:00 A.M.

Received: Monday, Week of Fair - 3:00-8:00 P.M.

Where: Fair Office (Sugar Alley Entrance)

Removal: Sunday - 2:00-4:00 P.M.

**Premiums: 1st-\$6.00; 2nd-\$5.00; 3rd-\$4.00; 4th-\$3.00**

#### Basis For Judging

1. Comb honey to be judged on perfection in filling, uniformity of capping, neatness and cleanliness of section.
2. Extracted honey to be judged on body, clarity, cleanliness and general appearance for market.
3. Beeswax to be judged on color, purity, uniformity, and freedom from crack and shrinkage.

Class

#### Honey

01011 Light Comb., 3 sections

01021 Dark Comb., 3 sections

01031 Light Extracted Honey - 3 one lb. jars

01041 Amber Extracted Honey - 3 one lb. jars

01051 Dark Extracted Honey - 3 one lb. jars

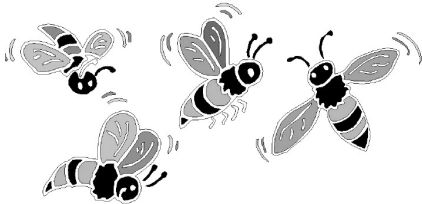
02011 **Beeswax** - Not less than one 3 lb. jar

02012 **Beeswax** - Molded - 5 Specimens on plate

#### Beeswax Candles

03011 Plain - 3 Specimen (7" to 10")

03012 Scented - 3 Specimen (5" to 10")

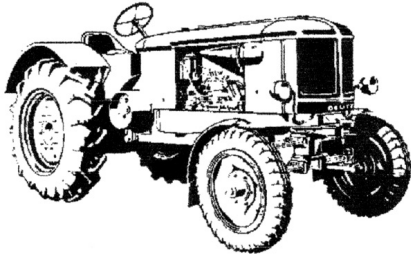


## ANTIQUA TRACTOR SHOW

At Tent City • Tuesday through Friday

Judging - Contests - Pedal Pull - Tractor Pull

*Featuring Deutz*



Tractor Games - Tuesday Tractor Pull - Friday

Pedal Pull - Thursday

Antique Engines & Equipment Welcome

Premiums & Ribbons

For Information Call 717-626-0435

## DEPARTMENT 24

### SECTION 101

#### Antique Farm Tractor Show

#### Grater Memorial Park

Chairmen: Les & Judy Landis - ext. 2411

Wes Kline

Robert Landis

Ken Leed

Tractor Games - Tuesday 6:00 P.M.

Tractor Pull - Friday 5:45 P.M.

#### Tractor Qualifications:

1959 and Older

#### Judging of Antique Tractor Will Be Based On:

A. Paint - Color, Shine, Tint

B. Clean of - Oil, Grease and Spots

C. Most Original

D. Decals Correctly Placed

E. Wheels, seat, steering wheels and radiator paint the correct color.

**Premiums: 1st-\$50.00; 2nd-\$40.00; 3rd-\$35.00;**

**4th-\$20.00; 5th-\$10.00**

**Best of Show: Rosette**

Dated participation plaques awarded to each exhibitor.

Class

01011 All Antique Tractors

01031 Feature Tractors

#### Tractor Games

Sign-Up Time: 6:00 p.m.

Garden tractors, steel wheels or track tractors not permitted in games.

#### Ribbons will be given for tractor games.

1. **Blindfold** - Driver is blindfolded, then drives tractor within a 20'x50' course, without going out of bounds. Crowd help not permitted. Use low gear. Closest to finish line without crossing it wins.
2. **Slow Race** - Slowest tractor to cross the finish line wins. No riding brakes or clutch. No stalling. No modified transmissions or drive trains.
3. **Teeter Totter** - Tractor driver drives on the teeter totter and tries to balance tractor within one limit. Best time wins.
4. **Chain in a Box** - Tractor driver drives a chain until the whole chain is in a box (chalk drawn on the ground). Timed event.
5. **Barrel Roll** - Tractor driver drives a barrel through a course. Timed event.

